



A-Tech Consulting, Inc.

Creating a Safer
Tomorrow, Today

Environmental | Safety | Engineering | Hydrogeology

atechinc.net | 800.434.1025

Our STORY



"A-Tech Consulting will be the national leader in environmental solutions, for every client in all industries."

OUR ROOTS

A-Tech emerged through humble beginnings, when founder and President, Robert L. Williams set out on his entrepreneurial venture with nothing more than a truck, a computer, and a dream. From the beginning, Robert wanted to ensure that it did not matter how much the company grew and how many customers we provided services to, our flagship clients would benefit from our expansion and continue to receive the personalized service they experienced and expected. As a testimony to this commitment, the three clients that came on board the day our doors opened are still our clients, more than 20 years later. The relationships built in the early days of our business led to over a decade of business based only on referrals. We had no sales team or outside marketing, yet we grew faster than projected, year over year. At A-Tech, we don't build a customer list. We build relationships and develop partnerships, and this is a major contributor to our ongoing success.

OUR JOURNEY

A-Tech became a truly family-owned and operated organization when Robert's wife Casandra joined the team in 2002 as CEO, bringing visions for growth and administrative organization. Being a Certified Environmental Infection Control Consultant, her expertise contributed to steady growth in services in the healthcare industry. In 2007, President's son Conan Williams joined the A-Tech team, worked his way up to become Vice-President, and has been an integral part of the customer experience. Adopting his Dad's mindset of building relationships, Conan leads our business development team and instills this mindset in every member of our growing team. In 2013, President's son Joe Williams joined the A-Tech team and worked his way up eventually taking the role of Director of Operations. With a mindset for both growth and providing consistent service, Joe ensures operations are running smoothly while overseeing expansion in both multiple locations and diversification of our services. Robert inspired each of us to always work hard, have a vision, have a plan, continue to learn, and most importantly, take care of people. During the 2014 Ebola outbreak, the A-Tech team trained over 500 nurses and doctors in Southern California on safe PPE donning, doffing, and work practices. During the 2020 pandemic, A-Tech's team was highly sought after to teach terminal cleaning methods to general industry providers, provide PPE solutions and training to healthcare staff all over the state, and ultimately be the premier provider of COVID compliance oversight for the entertainment industry.

OUR VISION

The growth of A-Tech continues to expand with the ongoing acquisition of top industry talent. Bernadette Guerrero, Director of Infrastructure and Finance, continues to develop our proprietary full-service database; EnviroShare, making it the most powerful, collaborative, and innovative resource in the industry. Roosevelt Ward, CIH, and Director of Environmental Health and Safety Division brings over 20 years of industrial and expertise to our organization. Roohi Toosi, PE and Director of Engineering, has the vision to develop A-Tech as the premier resource for hydrogeological and engineering services. Our executive leadership, together with our diverse and dedicated team, has experienced multiple years of massive growth, allowing A-Tech to be recognized by INC magazine as a consecutive five-time honoree, one of the 5000 fastest-growing privately-held US companies, from 2018 to 2022. Building on the foundation of our core values, the goal to continue to expand as the national environmental health and safety leader is attainable and sustainable. As you browse through the pages of our Statement of Qualifications, I hope our gratitude and our pride in our story, our team, our customers, and our vision come through these pages. Our team looks forward to building years of continued partnership with you.

THE A-TECH DIFFERENCE

"Dedicated to Creating a Safer Tomorrow, Today"

A-Tech's vision to making a safer and cleaner environment where you work, live and play drives our team to industry excellence in service. We have the solutions, the resources, and the innovation to meet the growing demands of evolving environmental hazard and exposure concerns for our customers in every location and industry we serve.



A-Tech Consulting Certifications



**Environmental
Made Easy**

DATA MANAGEMENT, SIMPLIFIED

Organization is a challenge when you have multiple properties and projects to oversee. With EnviroShare, you can access all of your data in one centralized site which allows you to zero in on the exact documentation you need with just a few clicks!

CONNECT YOUR TEAM

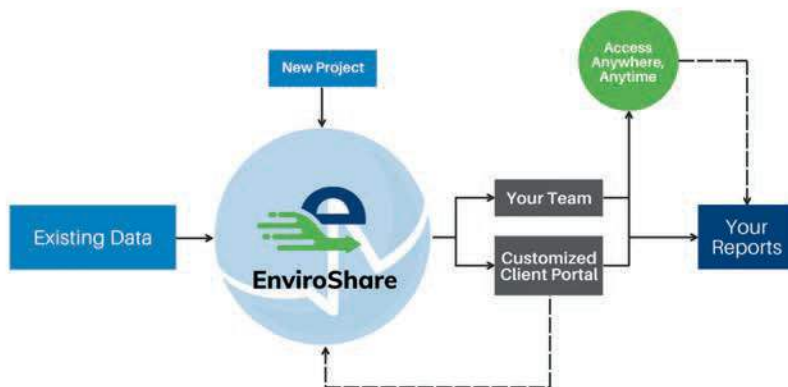
Granting access to collaborators has never been easier. A-Tech will help you manage guest users and help share relevant data between members of your team to simplify how you manage projects!

RETRIEVE YOUR DATA ANYWHERE, THROUGH THE CLOUD IN REAL-TIME

Ever had to dig through a sea of emails to find a historical report? You can access it through our cloud-based platform from your phone, tablet, laptop or any internet-enabled device!

ORGANIZATION, YOUR WAY

Our team can customize your Client Portal and incorporate your specific project names, reference numbers, site names and categories. Whether asbestos, lead, mold or any other type of project, our simple interface allows you to search and sort to find the reports you need.



Our PROMISE

At A-Tech Consulting, we are wholly committed to providing you with the best possible service and experience.

- Fast Turnaround
- Emergency Response
- Full-Cycle Project Management
- Simplified Detailed Thorough Reports
- Innovative Data Management



Leading Every Project With Our Core Values

INTEGRITY builds trust.

ACCOUNTABILITY guides our actions.

LEADERSHIP inspires our growth.

INNOVATION moves us forward.

RESPONSIVENESS sets us apart.

OUR TEAM



Casandra Williams | CEO

CAC, CDPH, CIEC, CEICC,

Casandra Williams, CEO, and co-founder has been a continuous catalyst for leadership, growth, and innovation at A-Tech. Her vision and focus are to continue to develop the organization to be the premier resource to the most talented industry professionals for its clients in all environmental disciplines throughout the country.



Robert Williams | President, Founder

CAC, CDPH, CEIC

Robert Williams has been in the Environmental industry since 1988. He began his career as a CADD drafter and technical writer. He is a Certified Asbestos Consultant, Lead Inspector/Assessor, Project Monitor, and Certified Environmental Indoor Consultant. Mr. Williams's vision for A-Tech has always been to develop a team of highly skilled and credentialed professionals capable of providing a unique suite of environmental services, unmatched in our industry.



Conan Williams | Vice President

CAC, CDPH, CIEC

Conan Williams joined the A-Tech team in 2006 as a field technician conducting a wide variety of environmental assessments. With over 15 years of experience in the industry, Conan has gained multiple certifications in multiple disciplines and has grown into the Vice President of A-Tech, continuing to pursue expansion and company growth for the future of A-Tech and Environmental Health and Safety.



Joseph Williams | Director of Business Operations

CAC, CDPH, Radon RMP

Joseph Williams has been in the environmental industry since 2008. He is a Certified Asbestos Consultant and California Department of Public Health Inspector/Assessor and Project Monitor. Mr. Williams specializes in managing large and complex projects and working with regulatory agencies to keep A-Tech's clients in compliance. Joe has a strong background in HUD, EPA and OSHA requirements.



Roosevelt Ward | Director of EHS

CIH, CSP, QISP

Roosevelt Ward, CIH and Director of EHS is an A-Tech leadership team member and during his tenure has been the mechanism of influence during A-Tech's EHS development. Mr. Ward's goals are focused on delivering high-quality products and services, service line diversification, national expansion, in addition to staff retention and development throughout all levels.



Bernadette Zita | Director of Finance & Infrastructure

Bernadette has been dedicated to implementing innovative solutions to optimize the delivery of quality environmental services. She has been involved in creating structure for internal operations to allow for efficiency and productivity throughout all levels of the company. Her vision is to keep A-Tech at the forefront of technology to elevate the A-Tech client experience.

Environmental, Health & Safety Team

Jay Sandoval, MS, CIH

Senior Industrial Hygienist

Patrick Naffah, CIH

Senior Industrial Hygienist

Kai Chiu, PE, CSP, CIH, CPE, CPCU, MBA

Certified Industrial Hygienist

Azita Assadi

Senior Project Geologist

Ralph Sbragia CSP, CHST

EHS Project Manager

Our Services

Industrial Hygiene

Hazard Assessment

- Air Contamination Assessments
- Occupational Exposure Risk Assessments
- Ergonomics Assessments
- Noise Monitoring
- Construction Monitoring & Oversight
- Toxic Environments Testing
- Forensic Sampling & Testing
- Universal Waste

Asbestos

- Comprehensive & Limited Surveys
- Abatement Design
- Abatement Oversight & Clearances
- Specification Work Plans
- Emergency Cleanup Plans
- Emergency Response Assessments
- Plans for Impacted ACM
- On-Site PCM Sample Analysis

Public Health

- Infection Control Risk Assessments
- Occupational Exposure Risk Assessments
- Infection Control Monitoring
- Viable Bacterial & Fungal Air Monitoring
- Viable Gloved Fingertip Sampling
- Pandemic Response & Testing

Radiation

- Short-Term & Long-Term Radon Exposure Assessments
- Radioactive Surveying & Sampling
- Radon Mitigation Design

Water Hygiene

- Water management plans
- Facility flow diagrams
- Potable & non-potable water quality
- Legionella & Water Sampling



Microbiology

- Air, Surface and/or Bulk Sampling
- Mold & Moisture Assessments
- Remediation Monitoring
- Clearance Inspections
- Sewage & Bacteria Assessments
- Adenosine Triphosphate (ATP) Sampling
- Decontamination Monitoring Clearance Inspections
- Industrial Hygiene Exposure Monitoring
- Personal & Area Monitoring
- WAGs Exposure Control Plans
- USP 797 Compounding Room Testing

Lead

- Lead-in-Point Surveys
- HUD-Level XRF Inspections
- Risk Assessments
- Lead Management Plans
- Remediation Design
- Clearance Testing
- Potable Water Sampling
- Confirmation Paint Chip Sampling



A-Tech Consulting, Inc.

800.434.1025 | atechinc.net

Our Services

Environmental Engineering

Due Diligence & Site Assessments

- Phase I and II Environmental Site Assessments
- Identify Recognized Environmental Concerns
- Conduct Environmental Sampling;
- Provide Recommendations
- UST and AST Site Closure
- Site Characterization

Environmental Sampling & Analysis

- Soil sampling at various depths
- Soil Vapor Sampling
- Groundwater Sampling
- Water Sampling
- Asphalt and Concrete Sampling
- Air Quality Sampling
- Environmental Remediation / Design and Construction

Risk Assessment

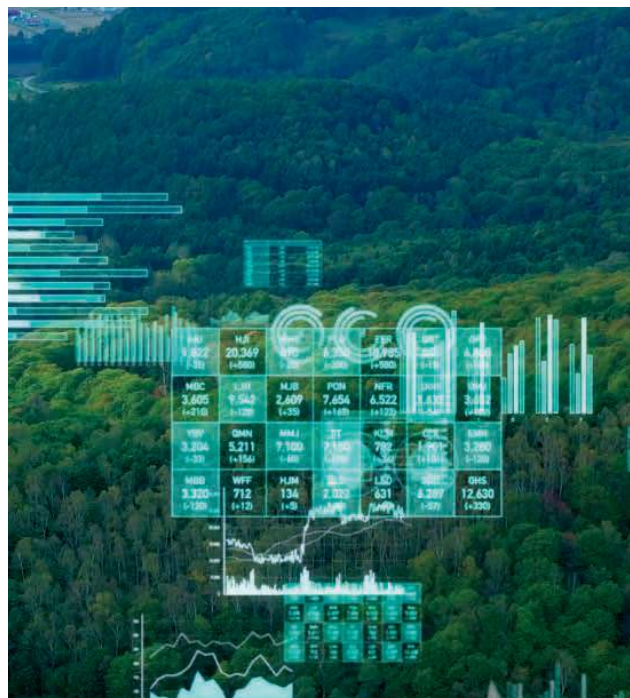
- Focused Feasibility Studies
- Design of Remedial System
- Overseeing Contractors' Activities
- Confirmation Sampling
- RCRA Facility Investigation and Superfund Sites

Comprehensive Site Characterization

- Potential Responsible Parties Cost Allocation
- Superfund Sites
- Corrective Measure Study

Legal Support and Expert Witness

- Technical Document Review
- Mediation
- Expert Testimony



Waste Management

- Waste Profiling and Sampling
- Waste Characterization
- Transport and Disposal
- Waste Policy Development

Groundwater Monitoring and Remediation

- Well Gauging and Sampling
- Regulatory Agencies' Order Compliance
- Monitoring Reports
- Remedial Design and Implementation

Environmental Permitting and Compliance

- Environmental Impact Reports
- CEQA and NEPA
- Well and Exploration Permits
- NPDES and Discharge Permits



A-Tech Consulting, Inc.

800.434.1025 | atechinc.net

Our Services

Water Resources Services

Groundwater Quality Assessment/ Emerging Contaminants (PFAS)

- Groundwater Monitoring Well Installation
- Groundwater Sampling and Analyses;
- PFAS Investigation and Characterization (Emerging Contaminants)
- PFAS Treatment

Hydrogeologic & Hydrologic Modeling

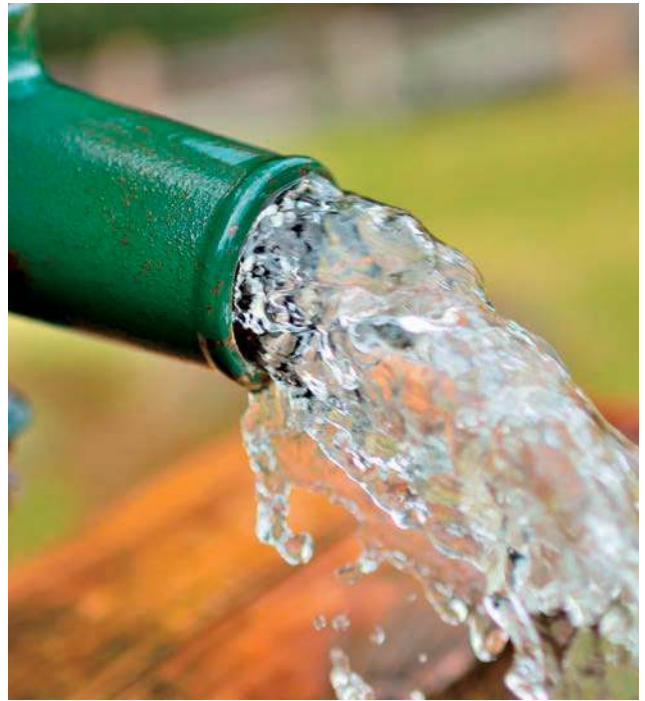
- Groundwater Flow Models
- Contaminant Fate and Transport Models
- Vadose Zone Models
- Integrated Hydrologic Models
- Surface Water Models

Water Supply Wells

- Well Siting and Evaluation
- Design and Specifications
- Well Construction and Development
- Well Rehabilitation

Groundwater Resources Management/ SGMA

- Sustainable Groundwater Management Act (SGMA) Compliance
- Water Demand Analyses
- Aquifer Storage and Recovery (ASR)



Hydrogeologic Evaluation and Basin Characterization

- Hydrogeologic Conceptual Models
- Water Budget
- Aquifer Characterization
- Recharge Evaluation

Stormwater Management

- Stormwater Pollution Prevention Plan (SWPPP)
- Storm Water Management Plans
- Sediment Transport Analysis
- Stormwater Sampling



A-Tech Consulting, Inc.

800.434.1025 | atechinc.net

Our Services

Health & Safety

Ergonomics | Human Factor

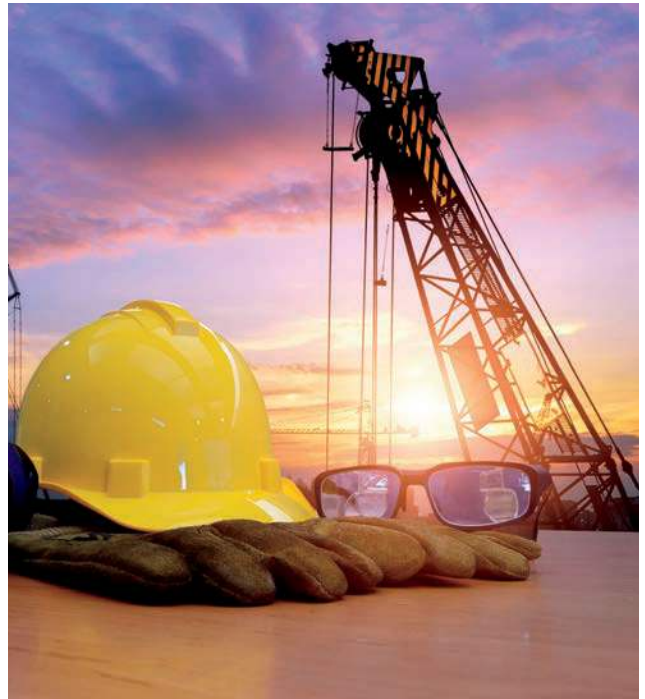
- Ergonomic Evaluation assessment
- Ergonomic Design
- Human Capacities Study
- LEAD
- Ergonomic Training
- California Ergonomic Compliance

Construction Health & Safety

- Fall Protection Evaluation
- Construction Site Safety & Oversight
- Confine Space Permitting & Monitoring
- Respiratory Protection
- Calcium Chloride Testing
- Site Characterization
- Silica Testing
- Hazardous Waste Management

Occupational Health & Safety

- Toxic Environments Testing
- Facility Audits
- Ergonomics Evaluation
- Hazardous Materials Inventory
- Silica Testing
- Farming Protection Program



Training

- Safety and Health Management
- Fall Protection
- Construction Site Safety & Oversight
- Confine Space
- Respiratory Protection Program
- Forklift
- Scissor Lift
- Rigging
- 30-Hour OSHA General/ Construction
- 40-Hour Hazardous Waste Operations
- Emergency Response
- Lockout/Tagout
- Bloodborne Pathogens
- Pandemic Influenza

Management

- EHS Program Management
- Hazardous Materials Management
- Food Processing Mitigation Management
- Pesticides/ Herbicides Farming Management
- Storm Water Management



A-Tech Consulting, Inc.

800.434.1025 | atechinc.net

Our INDUSTRY PARTNERS



"Building Partnerships That Last a Lifetime."

A-Tech is continuously expanding its services and acquiring experts in various markets who are uniquely qualified to provide consultation on any project. This transcends A-Tech to a full-cycle environmental consulting firm that can solve clients' environmental issues by relying on in-house expertise.



"Corporate social responsibility is an integral part of our culture at A-Tech."

In 2016, we established A-Tech CARES, a strategic non-profit that partners with local, national, and global non-profit organizations. Each year we offer dozens of donations to employee-nominated NPOs. We are proud to say that our employees are at the core of our volunteer service with multiple events organized throughout the year by our team.

A-Tech Cares





A-TECH CONSULTING, INC.

Creating a Safer Tomorrow. Today



1640 N. Batavia St. Orange, CA 92867
800.434.1025
www.atechinc.net
info@atechinc.net

